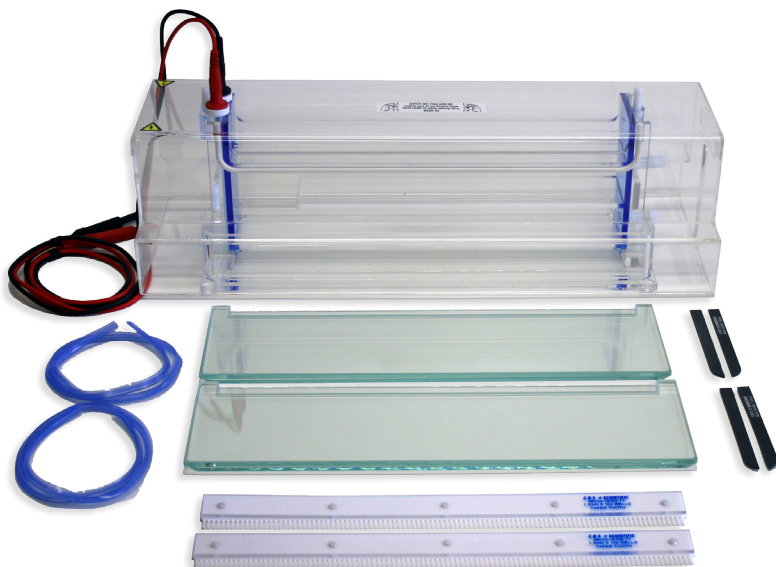


High-Throughput Mini-Gel screens up to 204 samples simultaneously



DUAL TRIPLE-WIDE MINI-VERTICALS

MGV-202-33, MGV-216-33

Complete System:

- Electrophoresis cell with cooling chamber and coolant recirculation ports
- Platinum electrodes
- Long-lasting silicone gasket
- Safety cover with power leads
- White spring clamps
- 2 combs
- 2 sets of Gel Wrap™ spacers
- 2 sets of Gel Wrap™ glass plates
- 2 lengths of Gel Wrap™ gasket

FEATURES

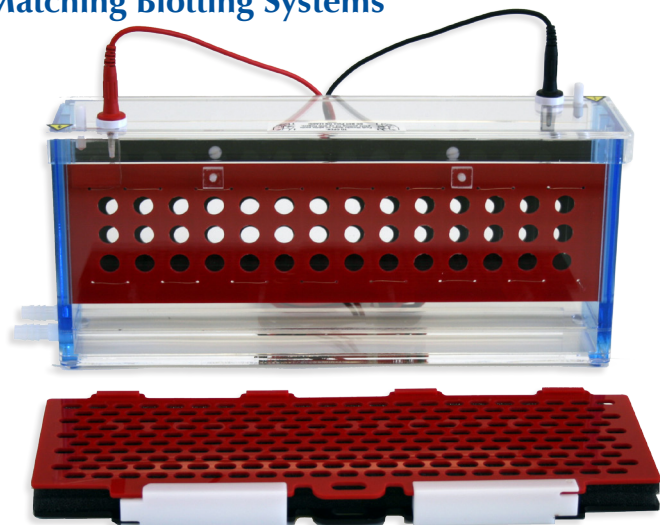
- Available in 2 sizes: Cat. # MGV-202-33 gel size 33cm (w) x 10cm (h) with matching Blotter EBU-302 or Cat. # MGV-216-33 gel size 33cm(w) x 16cm(h) with matching Blotter EBU-362.
- 33cm wide systems are ideal for electrophoretic separations of a large number of samples that require a relatively short pathlength for resolution.
- Internal cooling chamber for precise temperature control
- For easy identification the thickness and catalog # are printed on all combs and spacers. See reverse side for comb options.
- The MGV-202-33 & MGV-216-33 are specifically designed for the mass screening of up to 204 samples simultaneously. These systems can be used for fluorescence based assays whose images can be captured on a scanner directly through optional borosilicate glass plate sets. The 102 well microtitre-compatible comb is designed to run 96 samples plus controls on each side so that results from 2 microtitre plates can be analyzed simultaneously.

APPLICATIONS

- SDS-PAGE • Native PAGE

SPECIFICATIONS		
Model Cat. #	MGV-202-33	MGV-216-33
glass plate dimensions (cm)	33(w) x 10(l)	33(w) x 16(l)
total buffer volume for 2 slab gels	650mls	650mls
slab gel run time	35-40 minutes	35-40 minutes
Matching Blotter Cat. #	EBU-302	EBU-362
total buffer volume for 2 blots	2 L (EBU-302)	3 L (EBU-362)
blot run time	75 minutes	75 minutes
recommended power supply	EPS-300 or EPS-200	EPS-300 or EPS-200
overall dimensions (W x L x H)	17.7" x 7.5" x 4.7" 45cm x 19cm x 12cm	17.7" x 7.5" x 7.1" 45cm x 19cm x 18cm

Matching Blotting Systems



TRIPLE-WIDE MINI-BLOTTING SYSTEMS, 2-PLACE

EBU-302, EBU-362

Complete System:

- Blotting chamber with room for spin bar beneath cassettes and internal cooling base for temperature controlled runs
- 2 platinum electrode panels
- 1 blotting cassette with 2 sponge pads
- Safety cover with power leads
- Tubing adapters

The EBU-302 and EBU-362 Blotting Systems provide the capability of transferring 2 gels simultaneously under identical temperature controlled buffer conditions. Temperature control is achieved by passing coolant through the base of the blotter. The EBU-302 mini-vertical blotting system can accommodate gels of dimensions up to 32cm (w) x 9.5cm (h). The EBU-362 can accommodate gels of dimensions up to 32cm (w) x 13cm (h).

2 HANDCAST GEL OPTIONS FOR TRIPLE-WIDE SYSTEMS

Option #1:

MULTIPLE GEL CASTING METHOD:



TRIPLE-WIDE MULTIPLE GEL CASTING CHAMBER KITS, 4-PLACE

GCC-204-33K for MGV-202-33

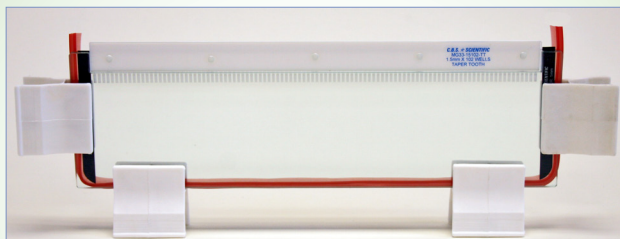
GCC-264-33K for MGV-216-33

Complete System:

- Multi-Caster Chamber with lid, silicone gasket, 6 stainless steel thumbscrews, backfill port connecting to central filling trough
- 4 sets notched glass plate sets
- 4 sets of spacers (choice of 0.75mm, 1.0mm or 1.5mm thickness)
- 4 combs
- Polycarbonate barrier sheets

Option #2:

GEL WRAP™ CASTING METHOD:



C.B.S. Scientific has developed a revolutionary leak-proof gasket, Gel Wrap, that seals the glass plate sandwich for gel casting quickly and easily. Each Triple-Wide Mini-Vertical comes with 2 gel wrap gaskets and all components necessary to cast 2 gels by this method.

COMB OPTIONS for 33cm wide units MGV-202-33, MGV-216-33
Overall length of comb = 28.4cm.

To calculate sample well volume expressed in millimeters (mm) of height, divide maximum volume by tooth depth.

Cat. #	tooth depth (mm)	# of teeth	thickness of teeth (mm)	tooth width (mm)	maximum volume/well (µl)
MG33-0731*	10	31	0.75	5.8	44
MG33-0750	10	50	0.75	4.05	30
MG33-0763*	10	63	0.75	2.95	22
MG33-07102*	10	102	0.75	2	15
MG33-1031*	10	31	1.0	5.8	58
MG33-1050	10	50	1.0	4.05	40
MG33-1063*	10	63	1.0	2.95	30
MG33-10102*	10	102	1.0	2	20
MG33-1531*	10	31	1.5	5.8	87
MG33-1550	10	50	1.5	4.05	60
MG33-1563*	10	63	1.5	2.95	44
MG33-15102*	10	102	1.5	2	30

*multi-channel pipettor compatible

ORDERING INFORMATION

TRIPLE-WIDE MINI-VERTICAL SYSTEMS & ACCESSORIES - 33CM(W) X 10CM(L)

Cat.#	Description
MGV-202-33	Dual Triple-Wide Mini-Vertical System, 33cm(w) x 10cm(l)
MGE33-0710	Additional Gel Wrap Gasket, 0.75mm thick, for 10cm(l) glass plate
MGE33-1010	Additional Gel Wrap Gasket, 1.0mm thick, for 10cm(l) glass plate
MGE33-1510	Additional Gel Wrap Gasket, 1.5mm thick, for 10cm(l) glass plate
MVS-0710R	Additional Gel Wrap Gasket Spacer Set, 0.75mm thick, 10cm(l)
MVS-1010R	Additional Gel Wrap Gasket Spacer Set, 1.0mm thick, 10cm(l)
MVS-1510R	Additional Gel Wrap Gasket Spacer Set, 1.5mm thick, 10cm(l)
MGP33-100R	Additional Gel Wrap Gasket Glass plate set, 33cm(w) x 10cm(l)
MGP33-100R-DN	Borosilicate (back plate only) Glass plate set for use with Gel Wrap Gasket, 33cm(w) x 10cm(l)
EBU-302	Triple-Wide Blotting System for MGV-202-33, 2 place. Includes 1 cassette.
EBC-302	Additional blotting cassette and sponge pads for EBU-302
GCC-204-33K	Triple-Wide Multiple Gel Casting Chamber Kit, 4-place, 10cm(l)
MVS-0710	Additional Multiple Gel Casting Chamber Spacer Set, 0.75mm, 10cm(l)
MVS-1010	Additional Multiple Gel Casting Chamber Spacer Set, 1.0mm, 10cm(l)
MVS-1510	Additional Multiple Gel Casting Chamber Spacer Set, 1.5mm, 10cm(l)
MGP33-100	Additional Multiple Gel Casting Chamber Glass plate set, 33cm(w) x 10cm(l)

TRIPLE-WIDE MINI-VERTICAL SYSTEMS & ACCESSORIES - 33CM(W) X 16CM(L)

Cat.#	Description
MGV-216-33	Dual Triple-Wide Mini-Vertical System, 33cm(w) x 16cm(l)
MGE33-0716	Additional Gel Wrap Gasket, 0.75mm thick, for 16cm(l) glass plate
MGE33-1016	Additional Gel Wrap Gasket, 1.0mm thick, for 16cm(l) glass plate
MGE33-1516	Additional Gel Wrap Gasket, 1.5mm thick, for 16cm(l) glass plate
MVS-0716R	Additional Gel Wrap Gasket Spacer Set, 0.75mm thick, 16cm(l)
MVS-1016R	Additional Gel Wrap Gasket Spacer Set, 1.0mm thick, 16cm(l)
MVS-1516R	Additional Gel Wrap Gasket Spacer Set, 1.5mm thick, 16cm(l)
MGP33-160R	Additional Gel Wrap Gasket Glass plate set, 33cm(w) x 16cm(l)
MGP33-160R-DN	Borosilicate (back plate only) Glass plate set for use with Gel Wrap Gasket, 33cm(w) x 16cm(l)
EBU-362	Triple-Wide Blotting System for MGV-216-33, 2 place. Includes 1 cassette.
EBC-362	Additional blotting cassette and sponge pads for EBU-302
GCC-216-33K	Triple-Wide Multiple Gel Casting Chamber Kit, 4-place, 16cm(l)
MVS-0716	Additional Multiple Gel Casting Chamber Spacer Set, 0.75mm, 16cm(l)
MVS-1016	Additional Multiple Gel Casting Chamber Spacer Set, 1.0mm, 16cm(l)
MVS-1516	Additional Multiple Gel Casting Chamber Spacer Set, 1.5mm, 16cm(l)
MGP33-160	Additional Multiple Gel Casting Chamber Glass plate set, 33cm(w) x 10cm(l)
MGP33-160R-DN	Borosilicate (back plate only) Glass plate set for use with Multiple Gel Casting Chamber, 33cm(w) x 16cm(l)