

SDS PAGE or DNA/Native gels with unsurpassed resolution and 2 year shelf life



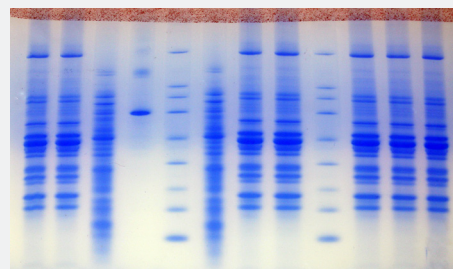
4 PRECAST GEL TYPES:

- 10cm x 10cm TEO SDS gels
- 10cm x 10cm DNA/Native gels
- 10cm x 8cm(h) TEO SDS gels
- 10cm x 8cm DNA/Native gels

FEATURES

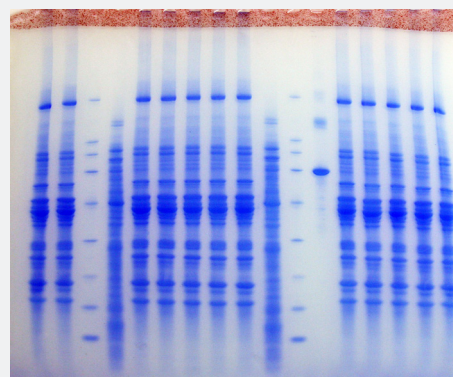
- Gel technology features a unique acrylamide polymer matrix for exceptional protein separations
- Sharp, clean, consistently straight bands
- 40% faster separation with "Turbo" buffer
- Super-strong gel makes handling easy... no tearing, ripping or cracking. Ideal for Western blots.
- There are no combs or tape to remove shortening prep time.
- Simple buffer system. Reusable lower buffer saves time and money. You can save up to 75% of the buffer cost.
- TEO gels have a neutral pH for a 2 year shelf life - never throw away another gel
- Cost-effective replacement for Novex™, Invitrogen and BioRad precast gels with a longer shelf life.
- All gels have the ability to expand the resolving range of a given gel by running the small proteins off the unsealed bottom of the gel.
- All gel types are available in 12-well and 17-well format. 2D and Prep-well (1 well) formats are also available.

16% ClearPAGE SDS precast gel, 8cm(h) x 10cm, 12 well



Lane 1	Chicken lysate
Lane 2	Chicken lysate
Lane 3	BSA
Lane 4	E. Coli
Lane 5	BioRad Markers
Lane 6	BSA
Lane 7	Chicken lysate
Lane 8	Chicken lysate
Lane 9	BioRad Markers
Lane 10	Chicken lysate
Lane 11	Chicken lysate
Lane 12	Chicken lysate

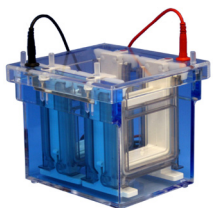
16% ClearPAGE SDS precast gel, 10cm(h) x 10cm, 17 well



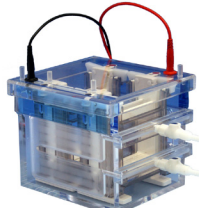
Lane 1	Chicken lysate
Lane 2	Chicken lysate
Lane 3	BioRad Markers
Lane 4	BSA
Lane 5	Chicken lysate
Lane 6	Chicken lysate
Lane 7	Chicken lysate
Lane 8	Chicken lysate
Lane 9	BioRad Markers
Lane 10	BSA
Lane 11	BioRad Markers
Lane 12	E. Coli
Lane 13	Chicken lysate
Lane 14	Chicken lysate
Lane 15	Chicken lysate
Lane 16	Chicken lysate
Lane 17	Chicken lysate

COMPATIBLE WITH:

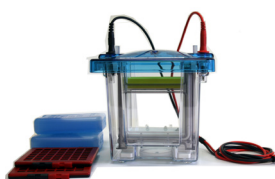
C.B.S. Scientific Electrophoresis Systems



Quadra QNX-700
4-place Combo Cell



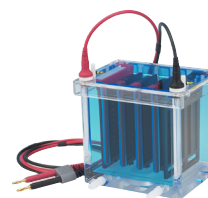
Quadra Cool QNC-700
4-place Combo Cell



Dual Cool DCX-700
2-place Combo Cell
with freezer blocks



Dual Mini-Verticals
MGV-202 and MGV-402,
internal cooling



Mini-Blotter EBU-204
4-place, cooling base



Mini-Blotter EBX-700
4-place with freezer
blocks

Also compatible with:

- Lonza™ PAGER® Minigel Chamber
- Bio-Rad Mini-Protean® Systems (requires gasket # BRGK-100)

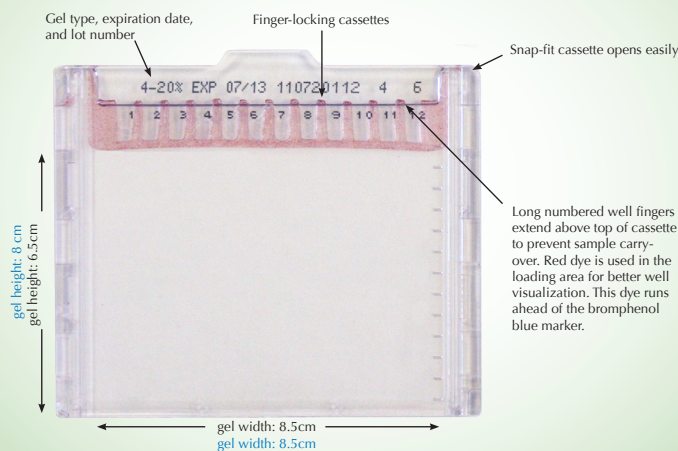
ClearPAGE™ is a trademark of C.B.S. Scientific. PAGEr™ and Lonza™ are trademarks of Lonza Corporation. XCell™ Novex™ and Invitrogen™ are trademarks of Life Technology Corp. Mini-PROTEAN® is a registered trademark of Bio-Rad Laboratories Corporation.

SPECIFICATIONS

Gel types	TEO SDS gels DNA/Native gels
Shelf life	2 years
Overall plastic cassette dimensions	8(h) x 10(w) x 5mm(d) 10(h) x 10(w) x 5mm(d)
Gel dimensions	6.5cm(h) x 8.5cm(w) x 1mm(d) 8.0cm(h) x 8.5cm(w) x 1mm(d)
Number of gels / box	10
Color of gel loading area	red (TEO gels) green (DNA/Native)
Gel thickness	1mm
Number of wells offered	12 & 17

CASSETTE FEATURES & DIMENSION

10cm x 10cm dimensions are in blue
10cm x 8cm dimensions are in black



GEL TYPES OFFERED AND RECOMMENDED RUNNING BUFFERS:

acrylamide %	10cm x 10cm TEO SDS # of wells offered	10cm X 8cm(h) TEO SDS # of wells offered	10cm x 10cm DNA/Native Gels # of wells offered	10cm x 8cm (h) DNA/Native Gels # of wells offered
8%	12, 17	12, 17		12, 17
10%	1*, 12, 17	12, 17	12, 17	
12%	1*, 12, 17	12, 17		12, 17
16%	12, 17	12, 17		12, 17
2 - 8%			12, 17	
3 - 20%			12, 17	
4 - 8%	12, 17	12, 17		12, 17
4 - 12%	12, 17	12, 17		12, 17
4 - 20%	1*, 2D*, 12, 17	12, 17	12, 17	12, 17
8 - 16%			12, 17	
Running Buffers	Turbo Buffer FB14050 SDS non-reducing Buffer FB50500 SDS reducing Buffer FB60500	Turbo Buffer FB14050 SDS non-reducing Buffer FB50500 SDS reducing Buffer FB60500	DNA/Native Run Buffer GB61500	DNA/Native Run Buffer GB61500

* Minimum order of 20 gels

COMB LOAD VOLUMES:

Well Type	Lane width	Maximum load volume
12-well	4.2 mm	35 µl
17-well	2.2 mm	17 µl
2-D well trough	70 mm	300 µl
2-D Marker Well	4.2 mm	17 µl
Prep-Well (1 well)	75 mm	400 µl

TEO Gel Features

Long Shelf Life: Never throw away expired gels again! These gels use a neutral pH gel buffer to reduce alkaline hydrolysis. Combined with reduced polymer swelling, all gels, including high percentage gels, carry a "Best By Date" of 2 years from the date of manufacture. They show no change in the separation when stored at 4°C during that period, and will give useful results for years afterward. The gels also may be stored at room temperature (up to 25°C) for 3 months after receipt.

Get Faster Separations with Turbo Buffer: Use ClearPAGE Turbo SDS Running Buffer (catalog #FB14053 and FB14500) to shift the gel separation range so as to increase spacing of smaller proteins. Gels run about 40% faster with Turbo running buffer. This buffer contains SDS, tris and MOPS, with 5mM sodium bisulfite. See our migration charts on pages 4. For antibody separations use the Tricine Buffer cat. # FB60500.

Better resolution and sensitivity: The gel technology in ClearPAGE™ products provide robust separations superior to other products on the market. Improved stacking allows large sample volumes so that 1mm ClearPAGE™ cassette gels have the equivalent sensitivity to 1.5mm gels. With the ClearPAGE™ team members' broad experience developing and making commercial pre-cast gels and our commitment to quality, you can be assured of high-quality, consistent performance every time.

Superior DNA Separations: Precast DNA and Native PAGE gels also have a long shelf life. These gels are a neutral pH and utilize a stacking system. Larger sample volumes (such as 35 µl/12 well and 17 µl/17 well) will still produce sharp bands. Refer to migration chart on page 5.

Incredibly strong & elastic gels:



New polymer and polymerization technology are used to make high-resolution, cross-linked polyacrylamide gels combined with a small amount of agarose in plastic cassettes without a coating. These gels are about 10 times stronger than the equivalent polyacrylamide gel without agarose, so they can be handled, stained, and dried without tearing or cracking, and blotted without sticking to your blotting membrane.

Instant Blue

A fast one-step stain

Easy to Use: Remove SDS, fix and stain in ONE STEP. No destain is needed.

Fast: Results in 10 to 30 minutes

Sensitive: 5-25ng of protein can be detected with low background

Non-Hazardous: Contains no methanol, suited for regular use and disposal

DESCRIPTION

Instant Blue stain is a ready-to-use, proprietary Coomassie G-250 stain that is optimal for obtaining well defined protein bands in a single step. Protein gel staining takes only 10-30 minutes because there is no need to wash, fix, microwave or destain. Instant Blue stain contains a proprietary SDS-sequestering agent (patent pending) that makes it so fast and easy. Since SDS binds stain, it normally must be removed to get good sensitivity. Usually some remains in the gel, which contributes to background and requires destaining. The SDS-sequestering agent removes the SDS from the gel, so no washes or destaining is necessary. Its special formulation has the benefits of high sensitivity (approximately 5-25ng of protein detected per band) and low background interference-improving the overall gel resolution. Additionally it contains no methanol and is ideally suited for regular use and disposal.

Two-Color SDS Marker

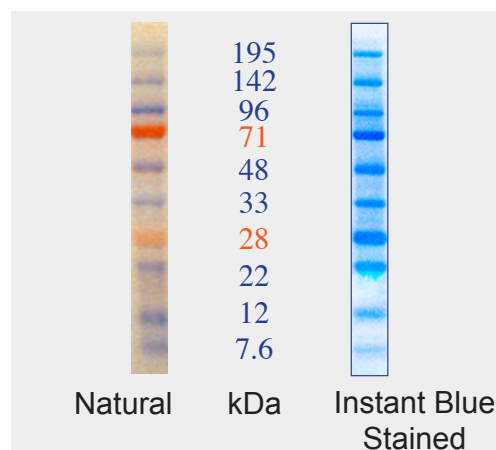
An orange/blue prestained marker for SDS-PAGE

Stable and Sharp Recombinant Proteins

Economical - Use in place of unstained markers

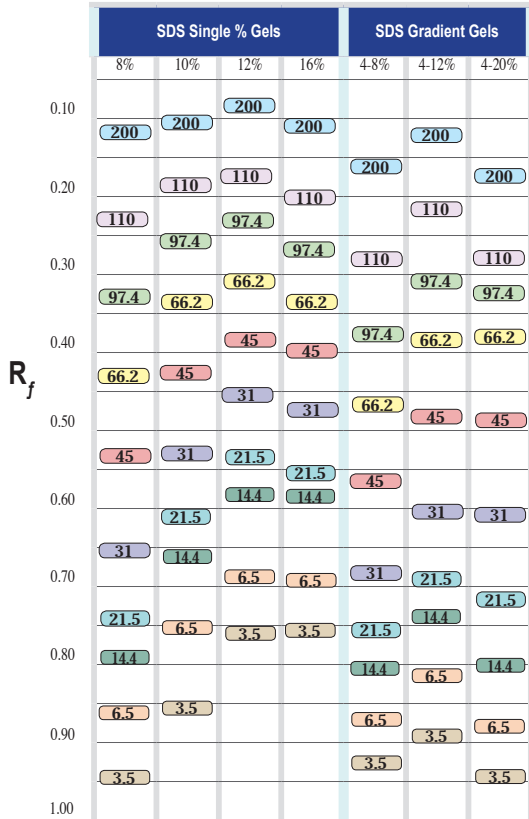
DESCRIPTION

The recombinant proteins range in size from 7.6 kDa to 195 kDa. The orange markers are 28 kDa and 71 kDa, the other 8 bands are blue. The ClearPAGE Two-Color SDS Marker is sold ready to use in a 1x LDS sample buffer with 600 µl per vial (catalog # HM05160). The purity and band sharpness mean the markers can be used for visualizing the separation while running the gel, checking effectiveness on your blot, or as a routine marker in place of other unstained markers.

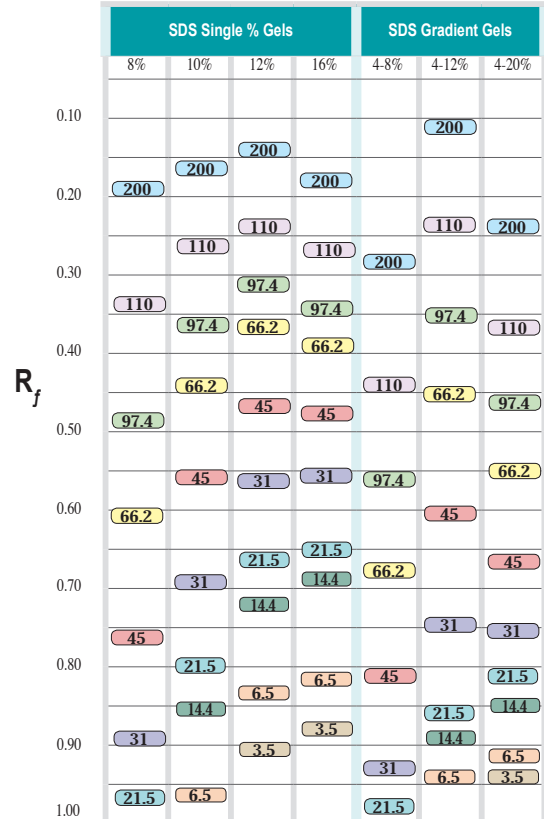


Comparison of Marker on ClearPAGE 12%, 12 well SDS gel with or with Instant Blue stain. Molecular weights are the apparent weights in the ClearPAGE SDS gel system.

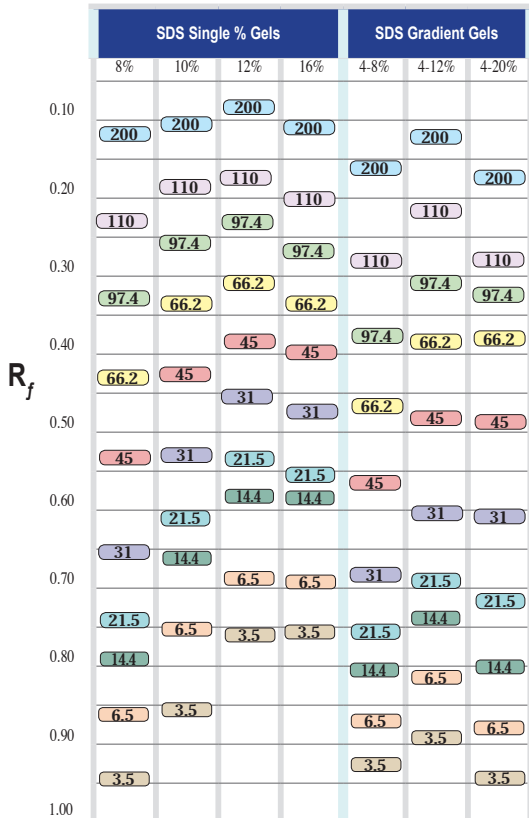
ClearPAGE™ 10cm x 10cm Precast Gel
Migration Chart in kDa
Turbo Buffer - Cat. # FB14500



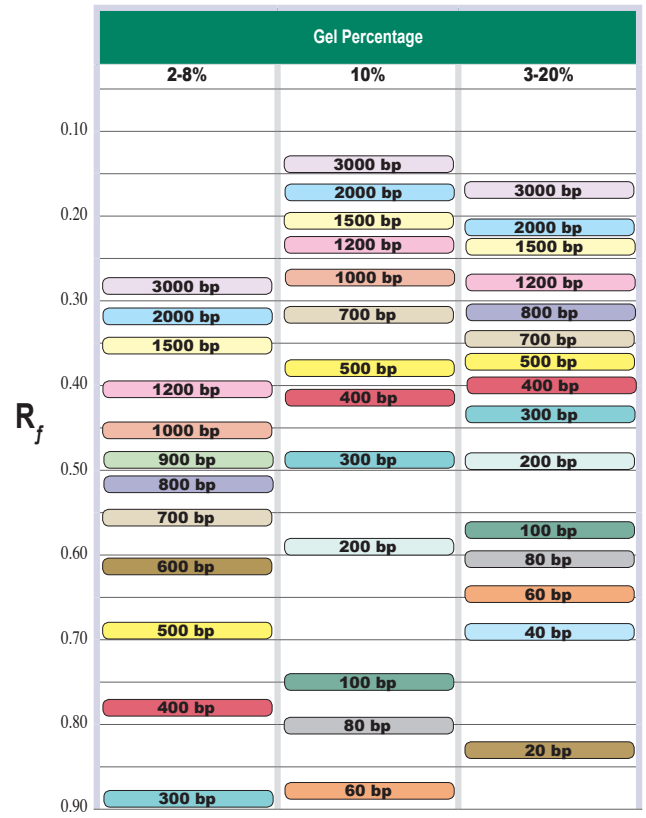
ClearPAGE™ 10cm x 10cm Precast Gel
Migration Chart in kDa
Tricine Buffer - Cat. # FB60500



ClearPAGE™ 8cm(h) x 10cm(w) Precast Gel
Migration Chart in kDa
Turbo Buffer - Cat. # FB14500



ClearPAGE™ 10cm(h) x 10cm(w) DNA/Native Precast Gel
Migration Chart in BP
DNA/Native Buffer - Cat. # FB14500



ORDERING INFORMATION

Protein Separations

ClearPAGE SDS gels- TEO, 10cm x 10cm, packages of 10		
Cat. #	acrylamide %	# of wells
FK00812-10	8%	12
FK00827-10	8%	17
FK01001-10	10%	1
FK01012-10	10%	12
FK01027-10	10%	17
FK01201-10 *	12%	1
FK01212-10	12%	12
FK01227-10	12%	17
FK01612-10	16%	12
FK01627-10	16%	17
FK40812-10	4 - 8%	12
FK40827-10	4 - 8%	17
FK41212-10	4 - 12%	12
FK41227-10	4 - 12%	17
FK42001-10 *	4 - 20%	1
FK42012-10	4 - 20%	12
FK42027-10	4 - 20%	17
ClearPAGE SDS gels- TEO, 10cm x 8cm(h), packages of 10 If using BioRad Mini-Protean™ order gasket adaptor kit BRGK-100.		
Cat. #	acrylamide %	# of wells
BK00812-10	8%	12
BK00817	8%	17
BK01012-10	10%	12
BK01017-10	10%	17
BK01212-10	12%	12
BK01217-10	12%	17
BK01612-10	16%	12
BK01617-10	16%	17
BK40812-10	4-8%	12
BK40817-10	4-8%	17
BK41212-10	4-12%	12
BK41217-10	4-12%	17
BK42012-10	4-20%	12
BK42017-10	4-20%	17

* minimum order of 30 gels

ClearPAGE buffers, stains and markers		
Cat. #	description	amount
FB31002	LDS Sample Buffer	2 ml
FB31010	LDS Sample Buffer	10 ml
FB32001	DTT reducer, 10X	1 ml
FB50053	SDS-non-reducing running buffer	50 ml
FB50500	SDS-non-reducing running buffer	0.5L
FB60053	SDS reducing running buffer	50 ml
FB60500	SDS reducing running buffer	0.5 L
FBI4053	Turbo buffer	50 ml
FBI4050	Turbo buffer	0.5 L
FB82500	Transfer buffer, with SDS	0.5 L
FB82600	Transfer buffer, without SDS	0.5 L
HG73010	Instant Blue stain	1 L
HG73050	Instant Blue stain, trial size	50 ml
HM05160	2-color marker	0.6 ml
HM05103	2-color marker, trial size	30 µl
ClearPAGE Blotting and Drying		
Cat. #	description	amount
FB82500	TGS transfer buffer, 10x	500 ml
HP19001	Blot sandwich NC 90 x 85mm, 0.2µl nitrocellulose/ 1mm blotting paper	2 pack
HP19020	Blot sandwich NC 90 x 85mm, 0.2µl nitrocellulose/ 1mm blotting paper	20 pack
HP29301	Blot sandwich PVDF 90 x 85mm, 0.2µl PVDF/ 1mm blotting paper	2 pack
HP29320	Blot sandwich PVDF 90 x 85mm, 0.2µl PVDF/ 1mm blotting paper	20 pack
HB04510	Gel drying solution	1 L
HB02520	Precut cellophane	20 sheets
HB90001	Drying frame with 8 clamps with cellophane	20 pieces of cellophane

DNA/Native Separations

ClearPAGE DNA/Native gels, 10cm x 10cm, packages of 10		
Cat. #	acrylamide %	# of wells
GN01012-10	10%	12
GN01027-10	10%	17
GN20812-10	2 - 8%	12
GN20827-10	2 - 8%	17
GN32012-10	3 - 20%	12
GN32027-10	3 - 20%	17
ClearPAGE DNA/Native gels, 10cm x 8cm(h), packages of 10		
Cat. #	acrylamide %	# of wells
BN01012-10	10%	12
BN01027-10	10%	17
BN32012-10	3-20%	12
BN32017-10	3-20%	17

ClearPAGE DNA/Native Buffers		
Cat. #	description	amount
GB33002	DNA/Native sample buffer, 4 x	2 ml
GB33010	DNA/Native sample buffer, 4 x	10 ml
GB61045	DNA/Native running buffer, 20 x	45 ml
GB61500	DNA/Native running buffer, 20 x	0.5 L
FB82500	Transfer buffer	0.5 L